



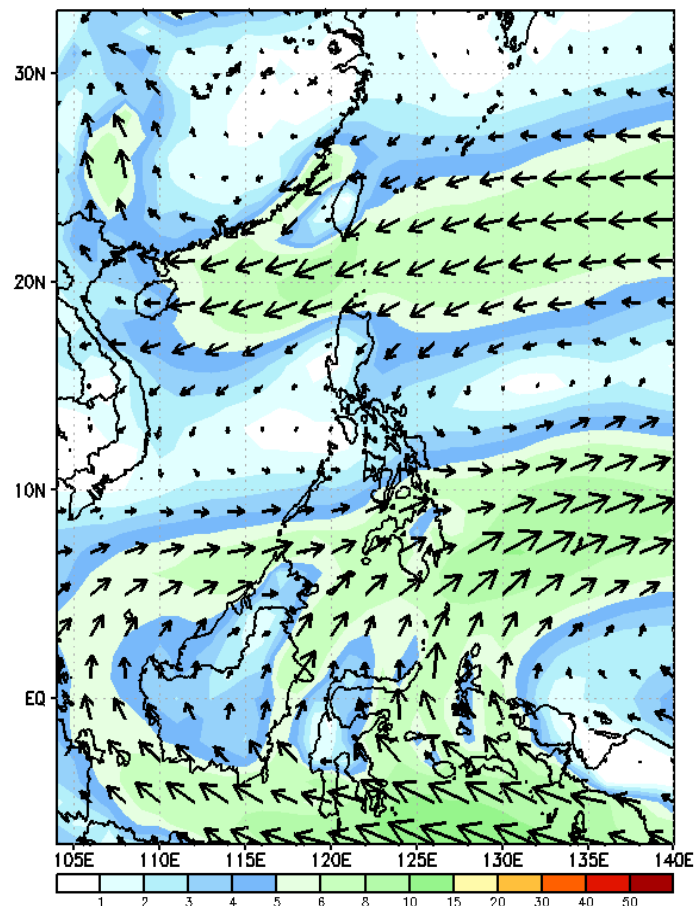
Week 1 & Week 2 Forecast for the Philippines using GEFS Model



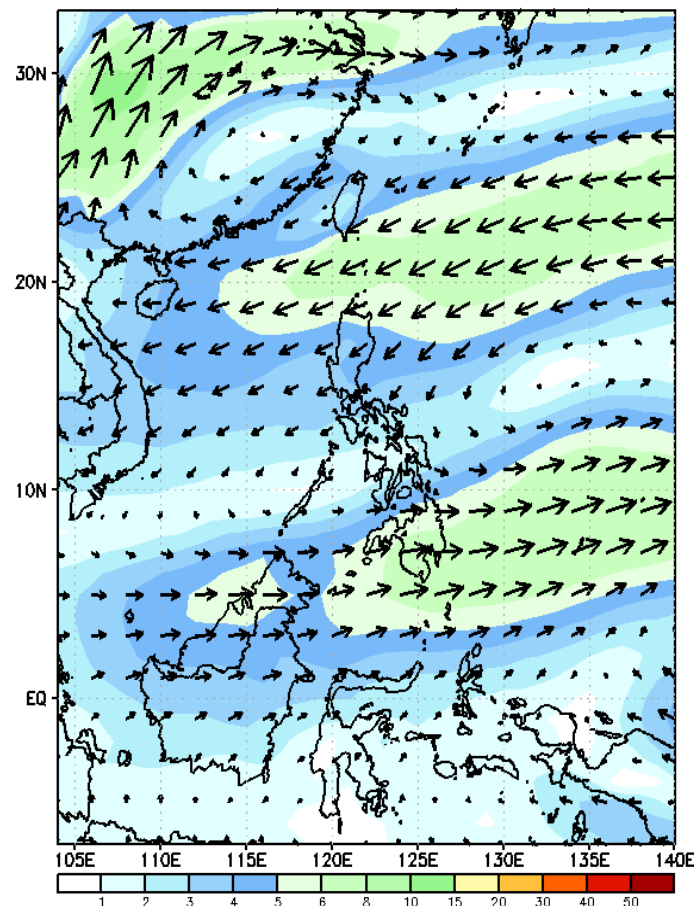
GEFS Week-1 Forecasts: Wind Forecast

Week 1: Sep 20-26, 2023

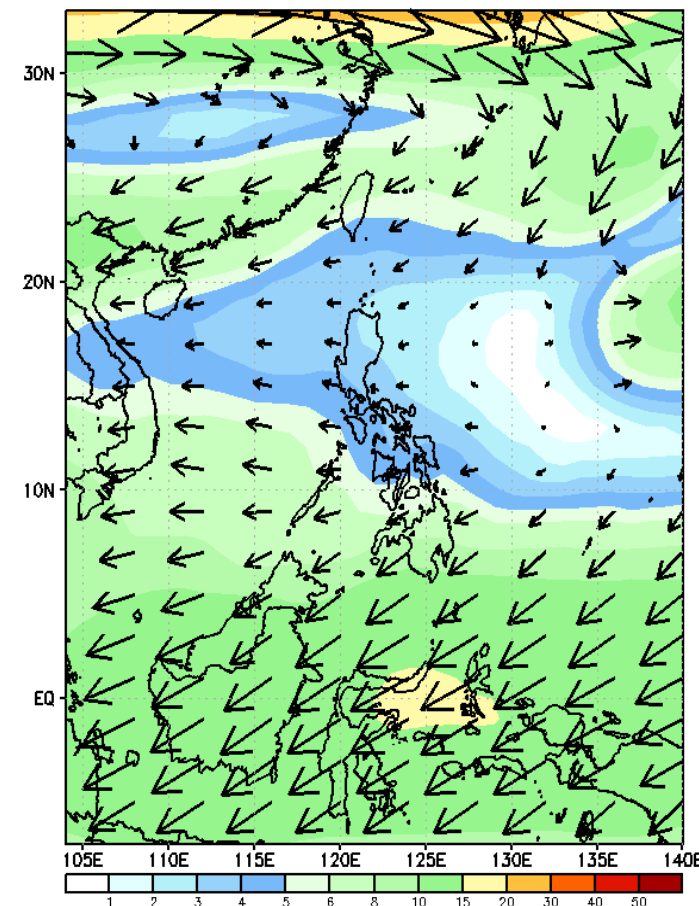
GEFS Week-1 850-hPa Wind Total
Valid: 20230920 - 20230926



GEFS Week-1 700-hPa Wind Total
Valid: 20230920 - 20230926

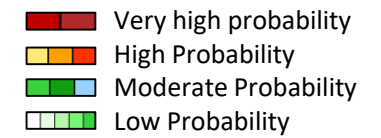


GEFS Week-1 200-hPa Wind Total
Valid: 20230920 - 20230926



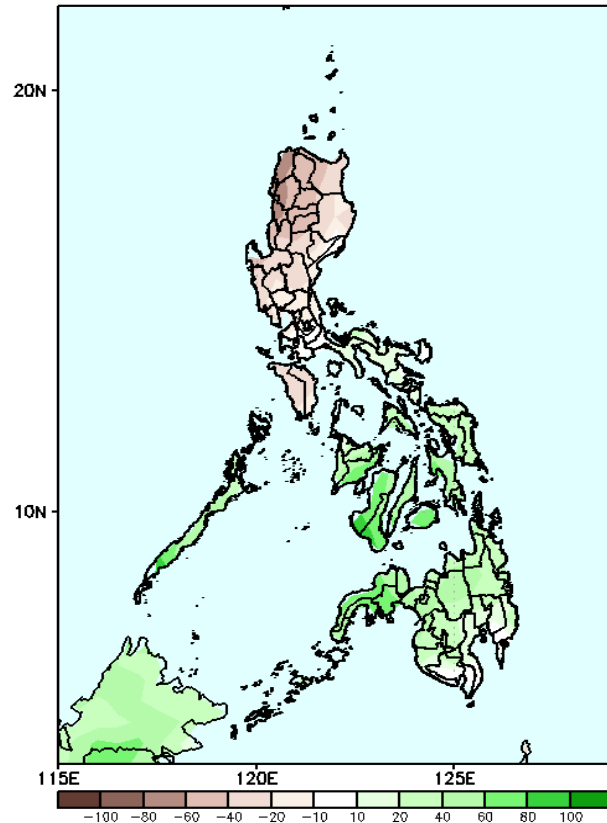
Weak Southwest monsoon affecting the western parts of Mindanao. Easterlies affecting the rest of the country.

Precipitation Anomaly and Exceedance Probability > 25/50 mm



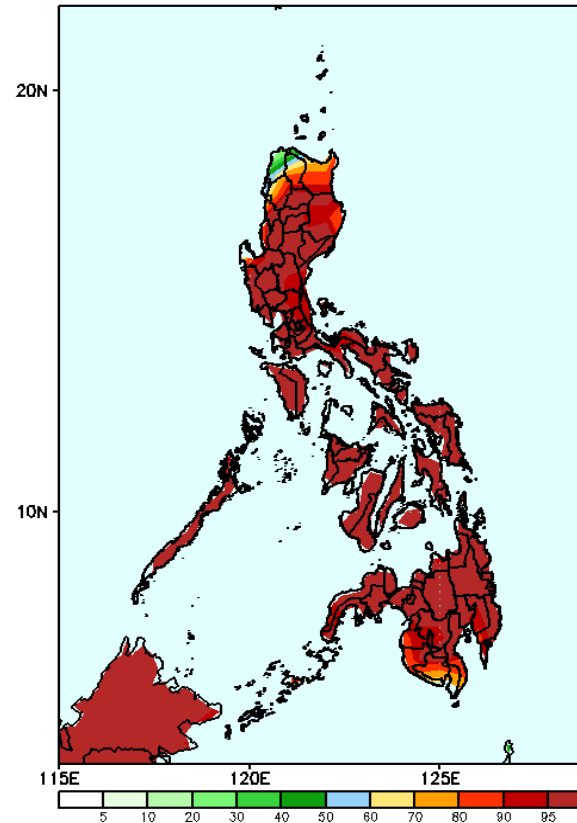
Week 1: Sep 20-26, 2023

GEFS Week-1 Precip Anomaly
Valid: 20230920 - 20230926



Rainfall deficit of 40-60mm is expected in most parts of Luzon while 40-80mm increase of rainfall will be likely in Visayas and Mindanao.

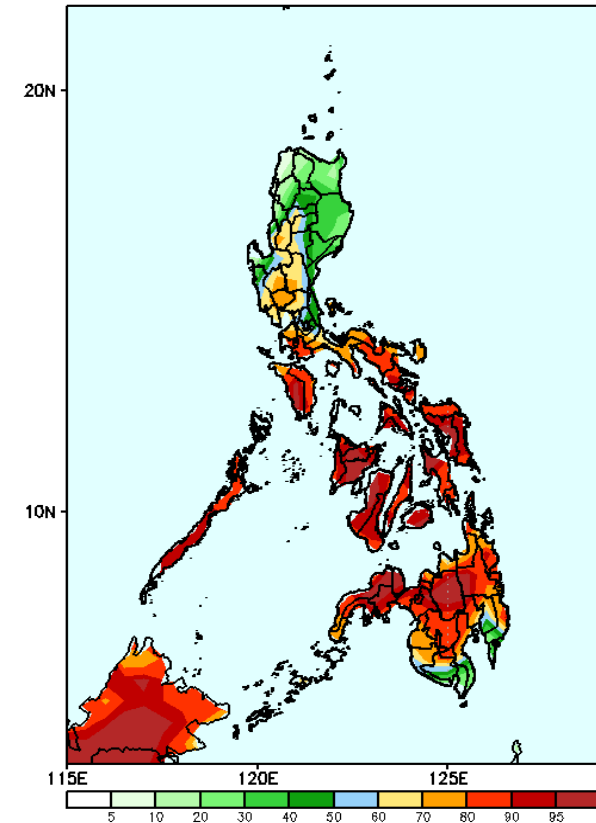
GEFS Week-1 Exceedance Prob. > 25mm
Valid: 20230920 - 20230926



Probability to Exceed 25mm

- High to very high in most parts of the country.

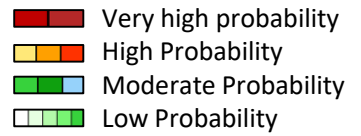
GEFS Week-1 Exceedance Prob. > 50mm
Valid: 20230920 - 20230926



Probability to Exceed 50mm

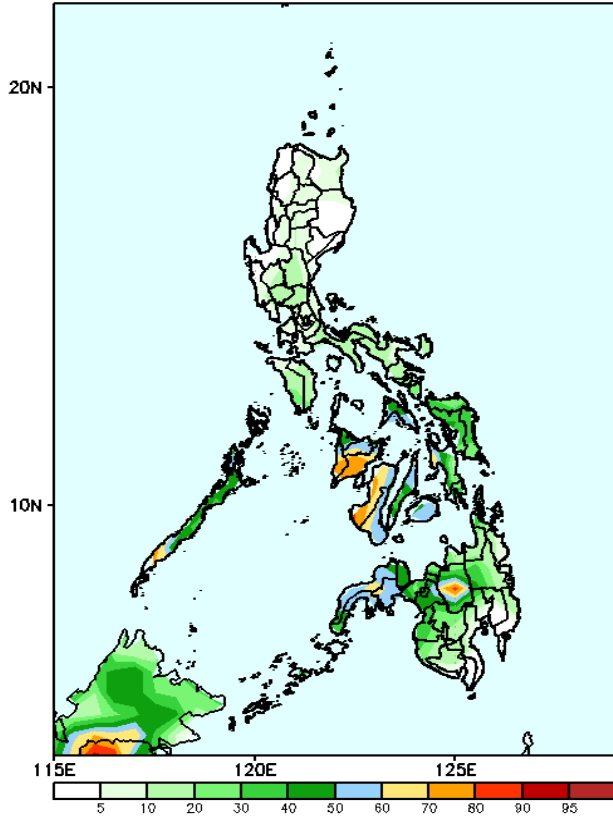
- High to very high in Visayas, Southern Luzon, and most of Mindanao;
- Moderate to high probability in NCR, Central Luzon, Benguet, Ifugao, Mountain Province, and Nueva Vizcaya.
- Low to moderate over the rest of Luzon

Exceedance Probability > 100/150/200 mm



Week 1: Sep 20-26, 2023

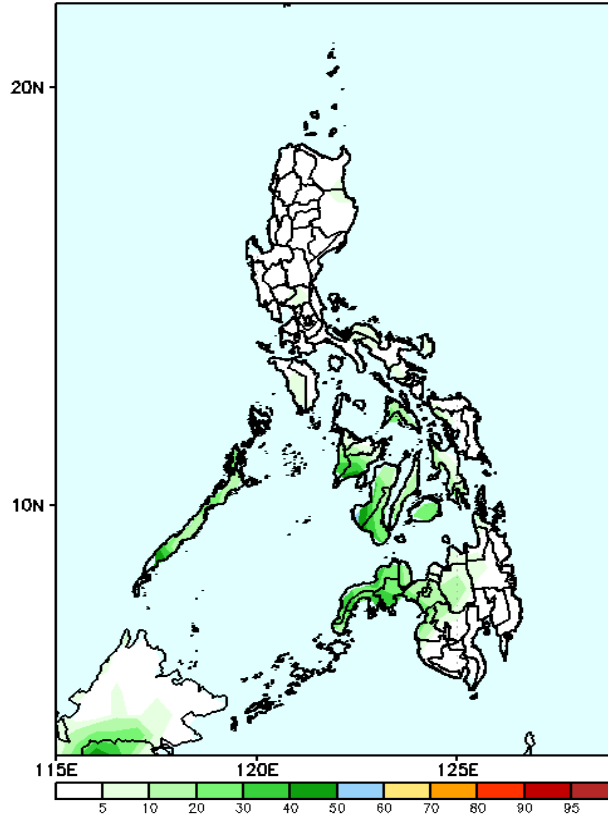
GEFS Week-1 Exceedance Prob. > 100mm
Valid: 20230920 - 20230926



Probability to Exceed 100mm

- Moderate to high in Palawan, Western and Central Visayas, Masbate, Bukidnon, Lanao provinces, and Zamboanga Peninsula;
- Low to moderate over the rest of the country.

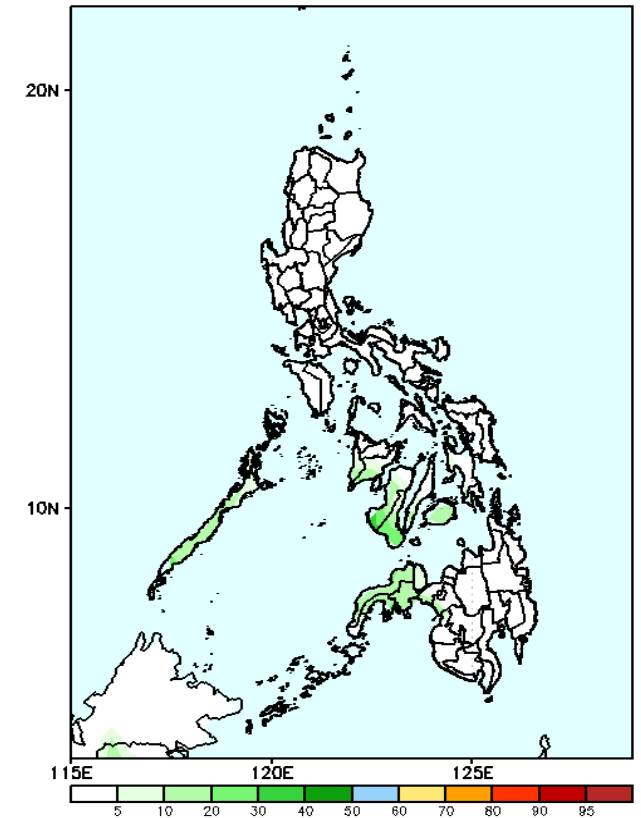
GEFS Week-1 Exceedance Prob. > 150mm
Valid: 20230920 - 20230926



Probability to Exceed 150mm

- Low in most parts of the country.

GEFS Week-1 Exceedance Prob. > 200mm
Valid: 20230920 - 20230926



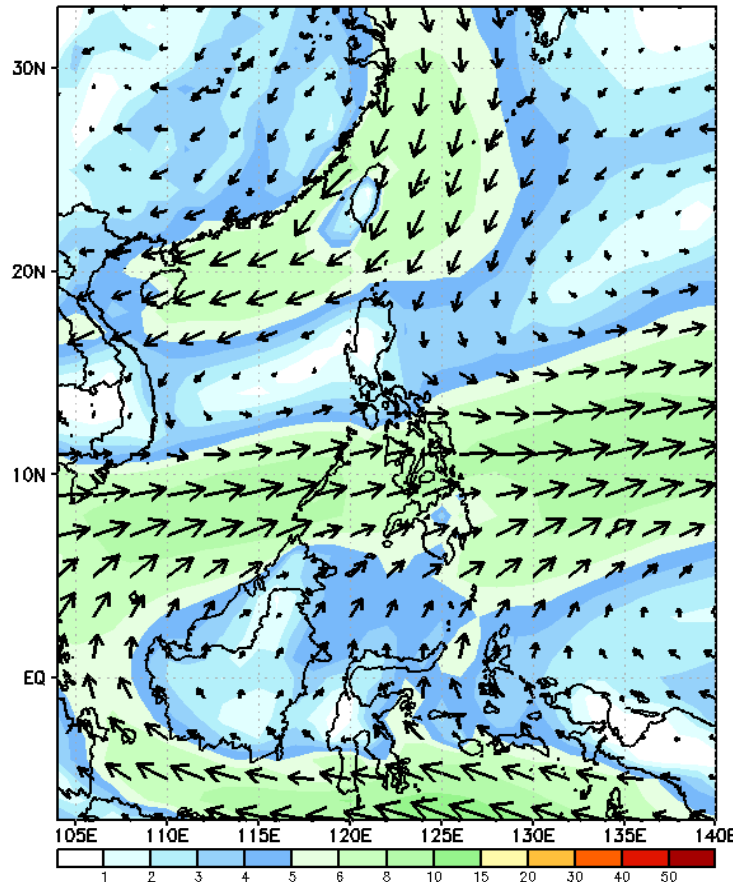
Probability to Exceed 200mm

- Low in most parts of the country.

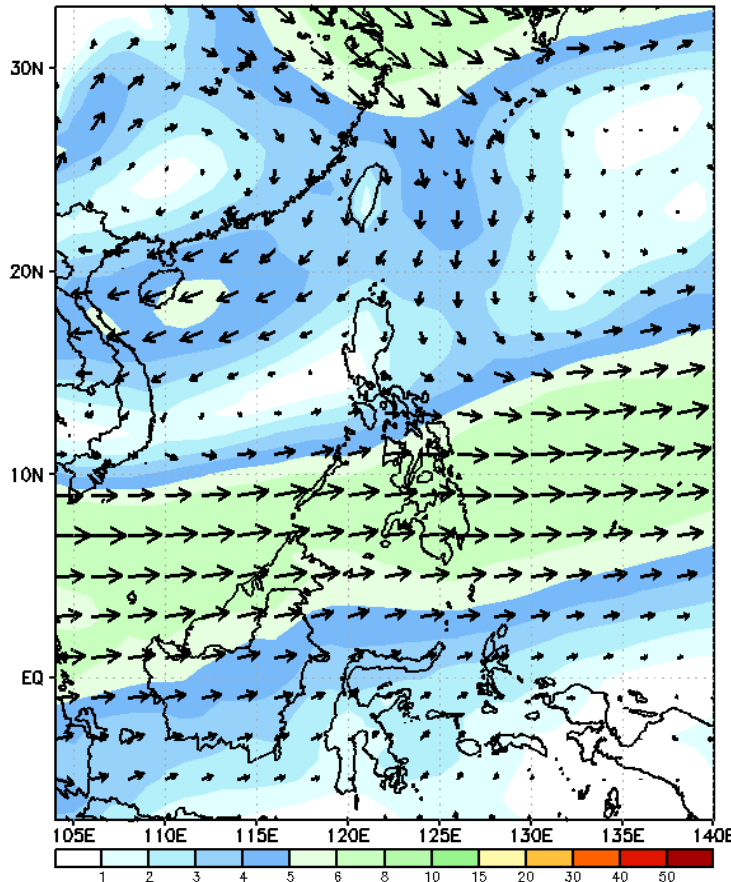
GEFS Week-2 Forecasts: Wind Forecast

Week 2: Sep 27- Oct 03, 2023

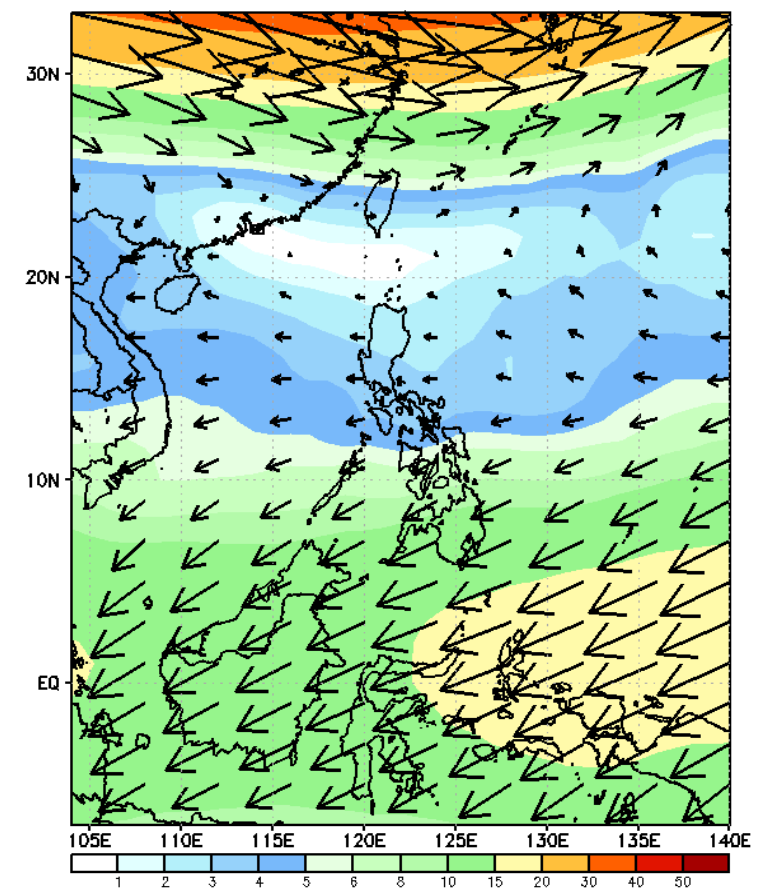
GEFS Week-2 850-hPa Wind Total
Valid: 20230927 - 20231003



GEFS Week-2 700-hPa Wind Total
Valid: 20230927 - 20231003

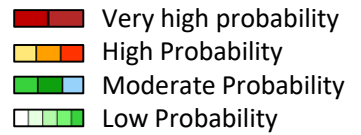


GEFS Week-2 200-hPa Wind Total
Valid: 20230927 - 20231003



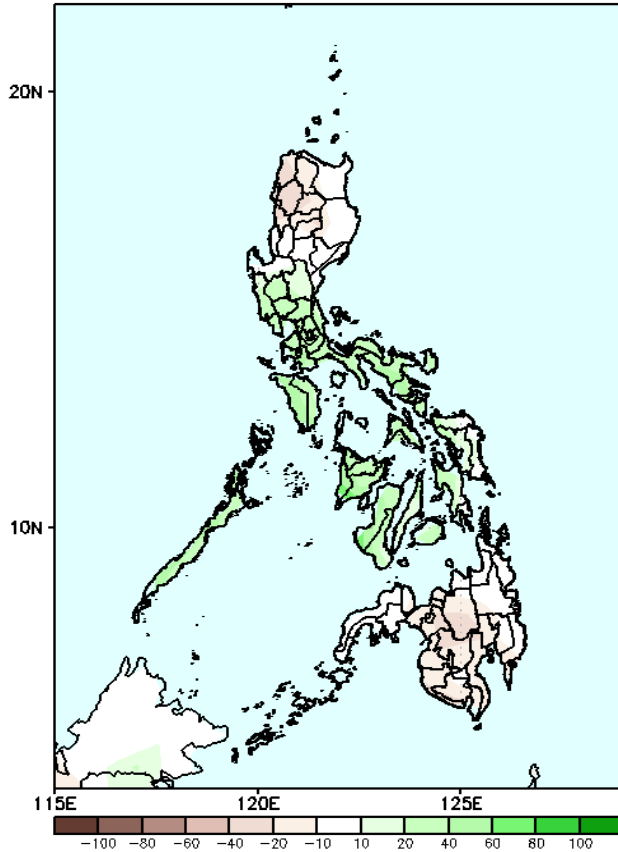
Southwest Monsoon is forecasted to affect some areas in Western Visayas and Western Luzon.
Northeasterly windflow affecting the northern parts of Luzon.

Precipitation Anomaly and Exceedance Probability > 25/50 mm



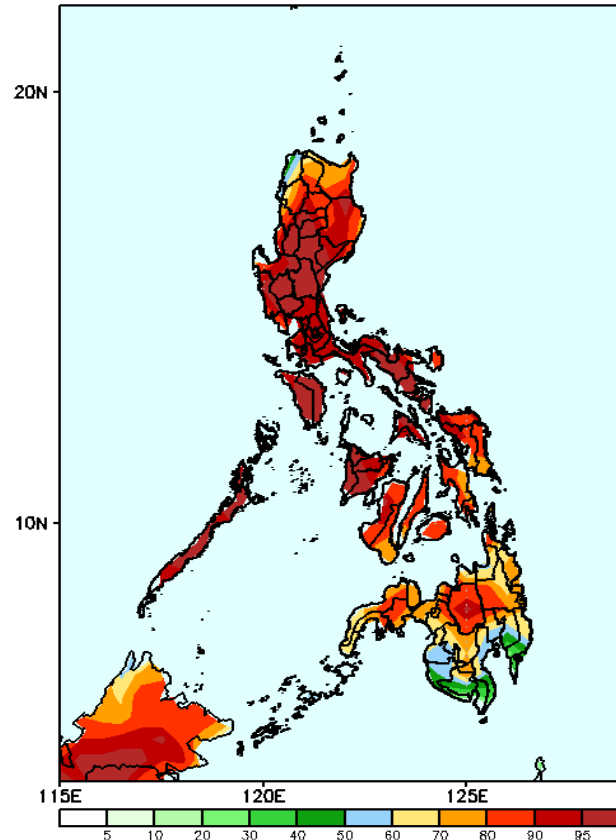
Week 2: Sep 27- Oct 03, 2023

GEFS Week-2 Precip Anomaly
Valid: 20230927 - 20231003



Rainfall deficit of 20-40mm is expected in Northern Luzon and Mindanao while 20-60mm increase of rainfall for the rest of Luzon and most of Visayas.

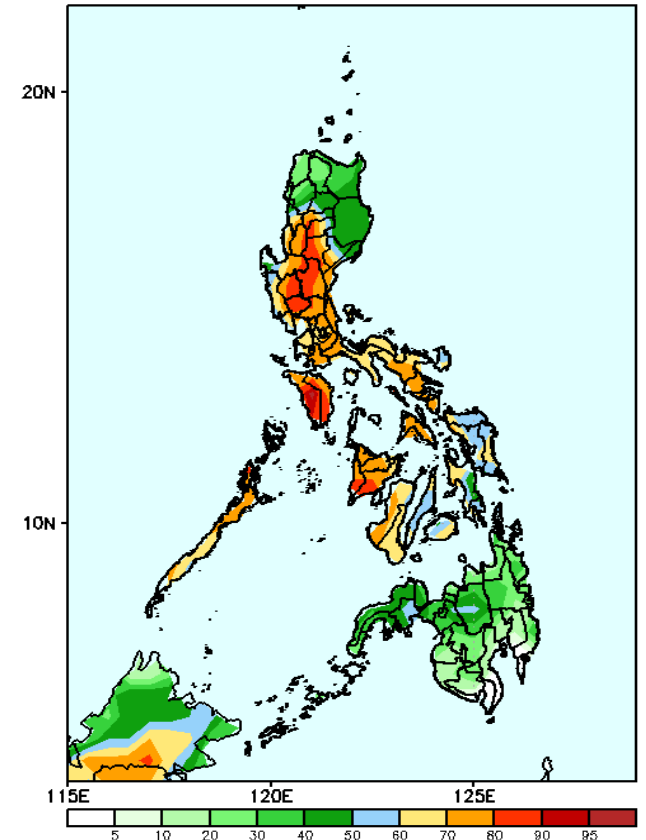
GEFS Week-2 Exceedance Prob. > 25mm
Valid: 20230927 - 20231003



Probability to Exceed 25mm

- High to very high in most parts of Luzon and Visayas, Caraga, Northern Mindanao, and Zamboanga Peninsula;
- Moderate to high over the rest of Mindanao.

GEFS Week-2 Exceedance Prob. > 50mm
Valid: 20230927 - 20231003

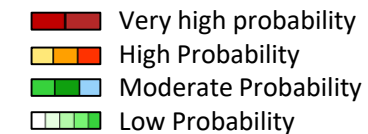


Probability to Exceed 50mm

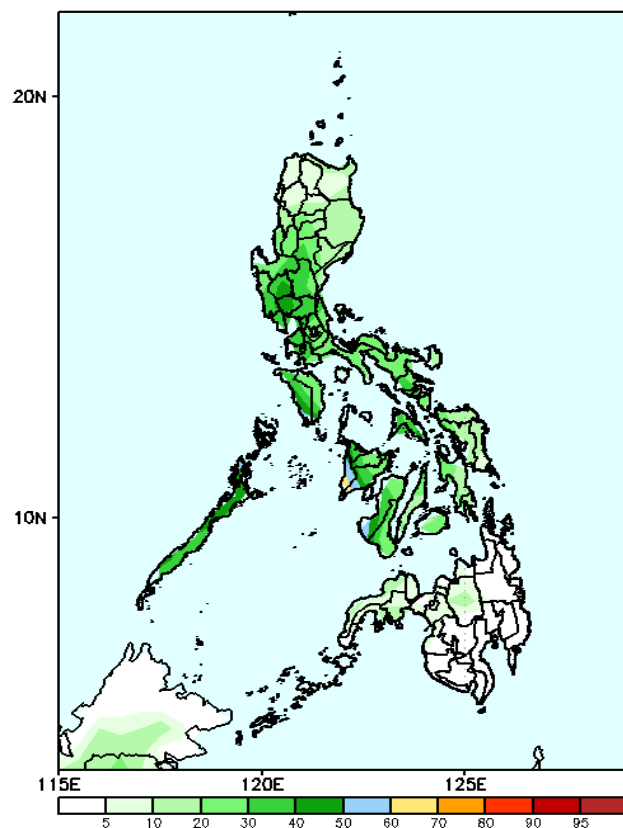
- Moderate to high in most parts of Luzon and Visayas, Bukidnon, Lanao provinces and Zamboanga Peninsula;
- Moderate to low over the rest of the country.

Exceedance Probability > 100/150/200 mm

Week 2: Sep 27- Oct 03, 2023



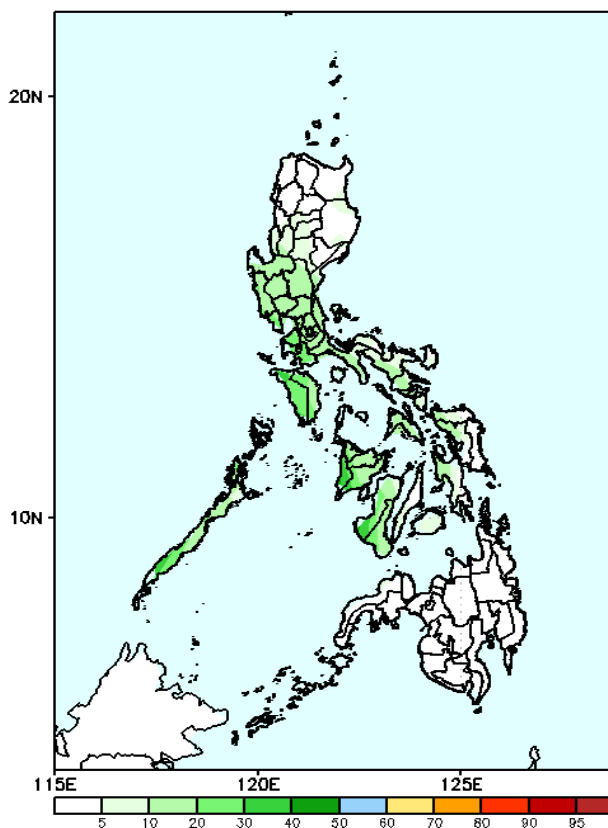
GEFS Week-2 Exceedance Prob. > 100mm
Valid: 20230927 - 20231003



Probability to Exceed 100mm

- Moderate to high over portions of Antique, Iloilo, Guimaras, and Negros Occidental.
- Low over the rest of the country.

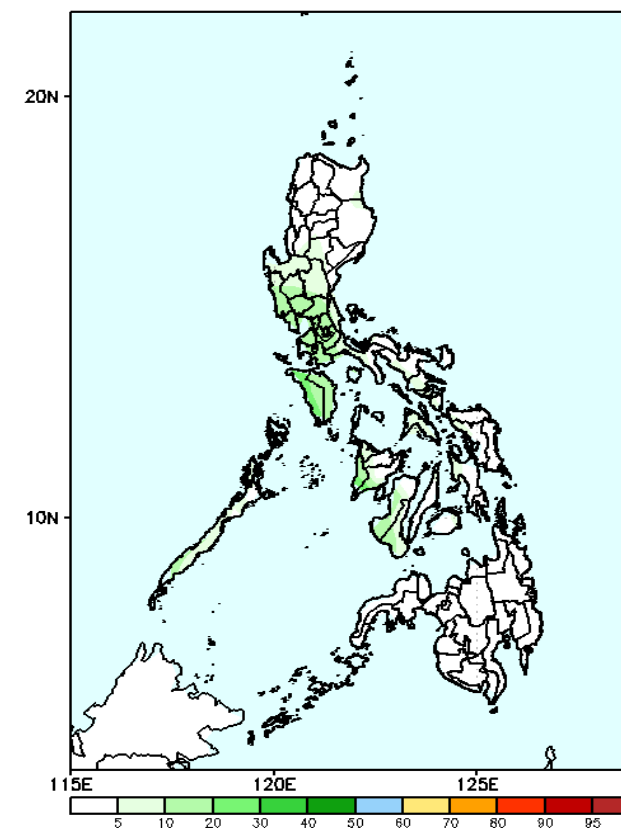
GEFS Week-2 Exceedance Prob. > 150mm
Valid: 20230927 - 20231003



Probability to Exceed 150mm

- Low in most parts of the country.

GEFS Week-2 Exceedance Prob. > 200mm
Valid: 20230927 - 20231003

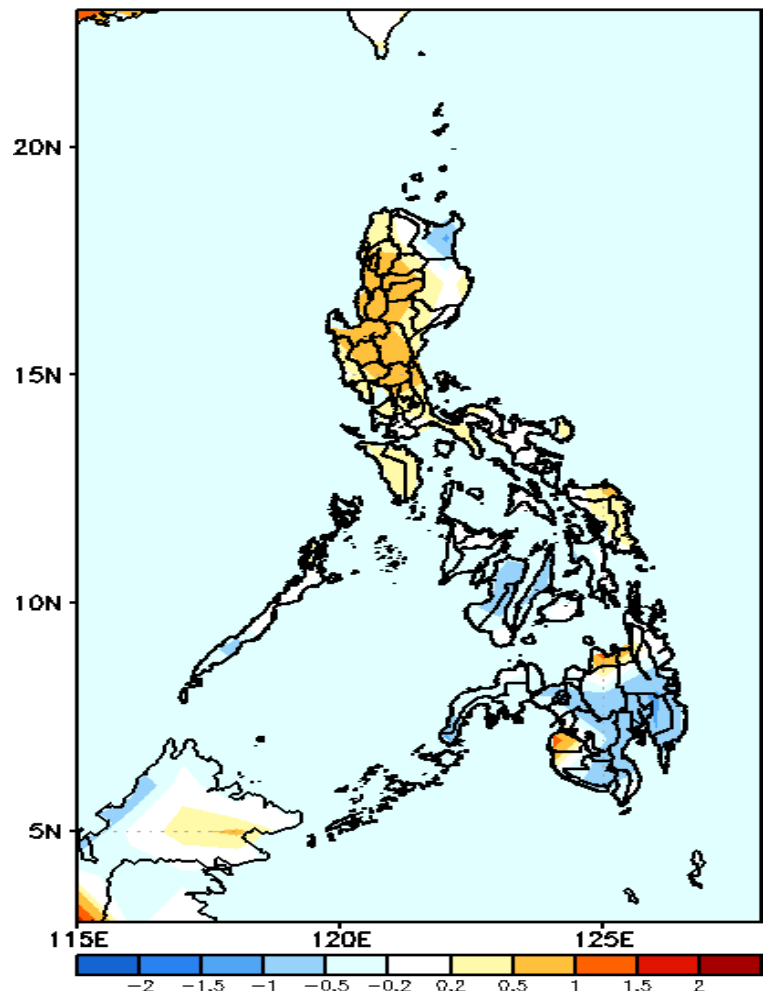


Probability to Exceed 200mm

- Low in most parts of the country.

GEFS Week-1 & 2 Forecasts: T2m Anomaly

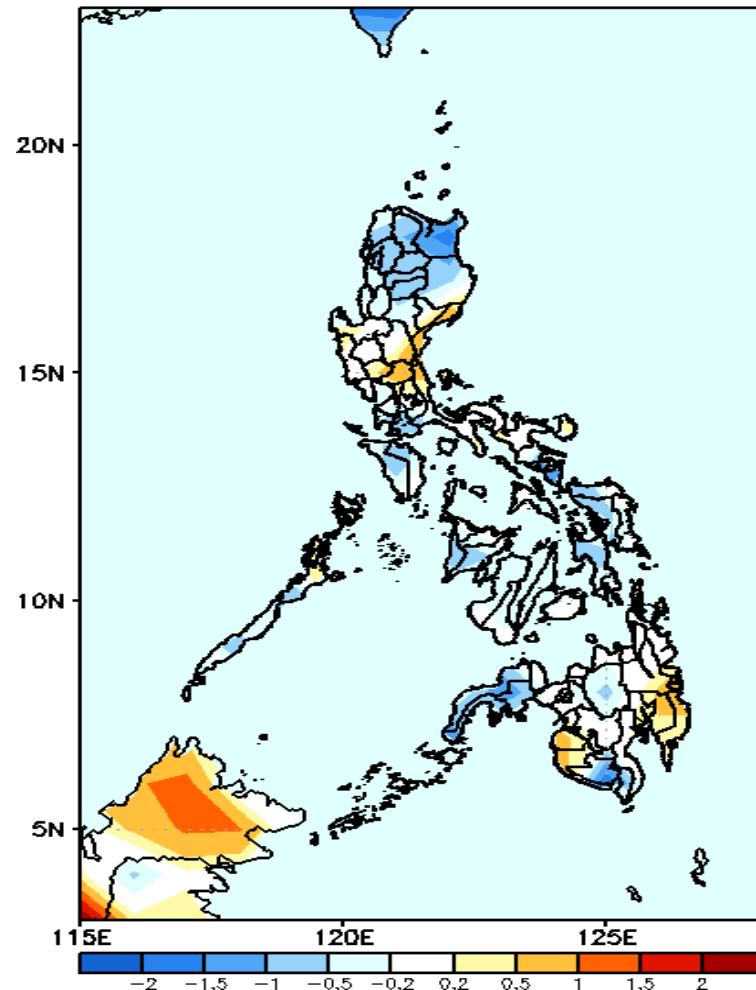
GEFS Week-1 T2m Anomaly
Valid: 20230920 - 20230926



2m Temperature Week 1: Sep 20-26, 2023

Average to warmer than average surface air temperature will likely experience in most parts of Luzon (except Cagayan and parts of Palawan), Samar provinces, Misamis Oriental, Maguindanao and Sultan Kudarat while slightly cooler to cooler than average temperature will be likely over the rest of the country.

GEFS Week-2 T2m Anomaly
Valid: 20230927 - 20231003



2m Temperature Week 2: Sep 27- Oct 03, 2023

Average to cooler than average surface air temperature will likely be experience in most parts of the country except Pangasinan, Central Luzon, Catanduanes, Davao Region, Maguindanao, Sultan Kudarat and Davao Region were slightly warmer to warmer than average temperature will be likely.